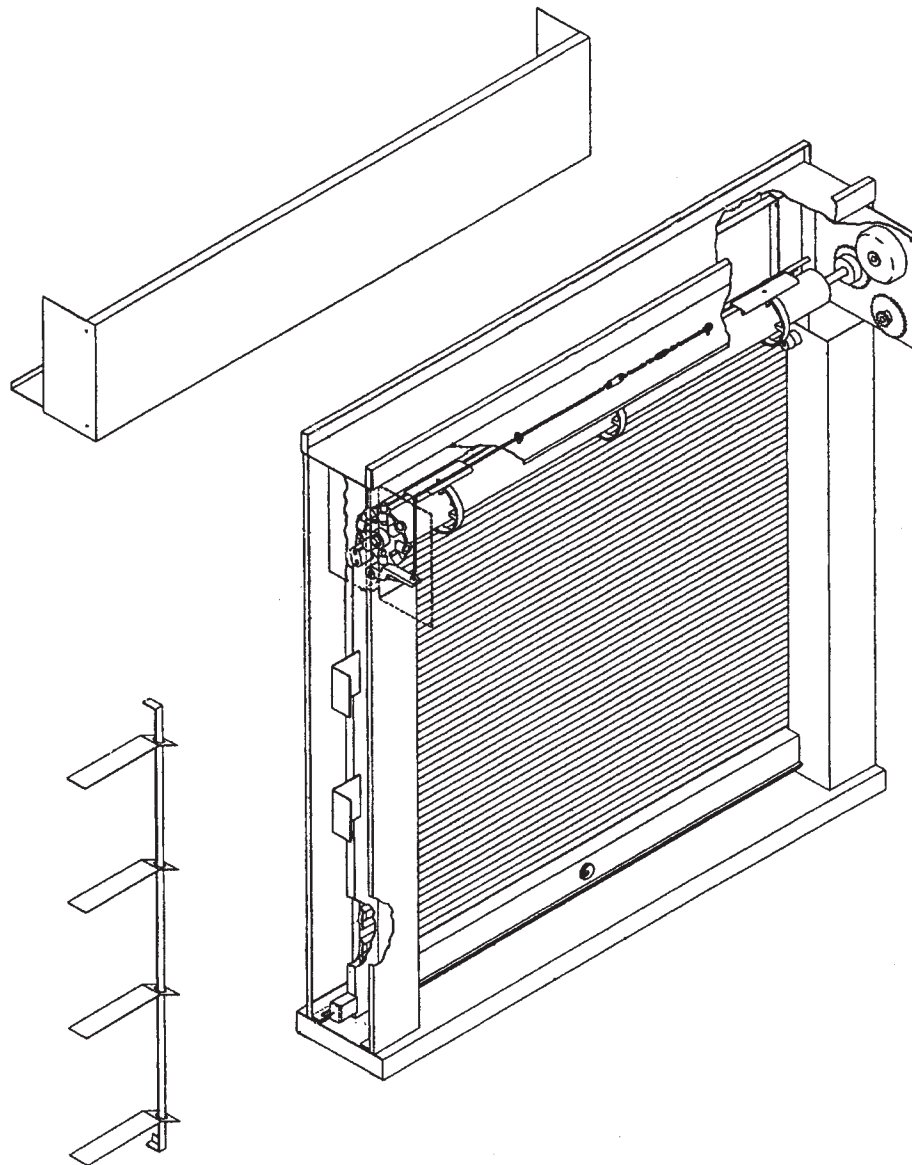


CORNELL

Innovative door solutions.®

Operation & Maintenance Manual

Products: Package Unit

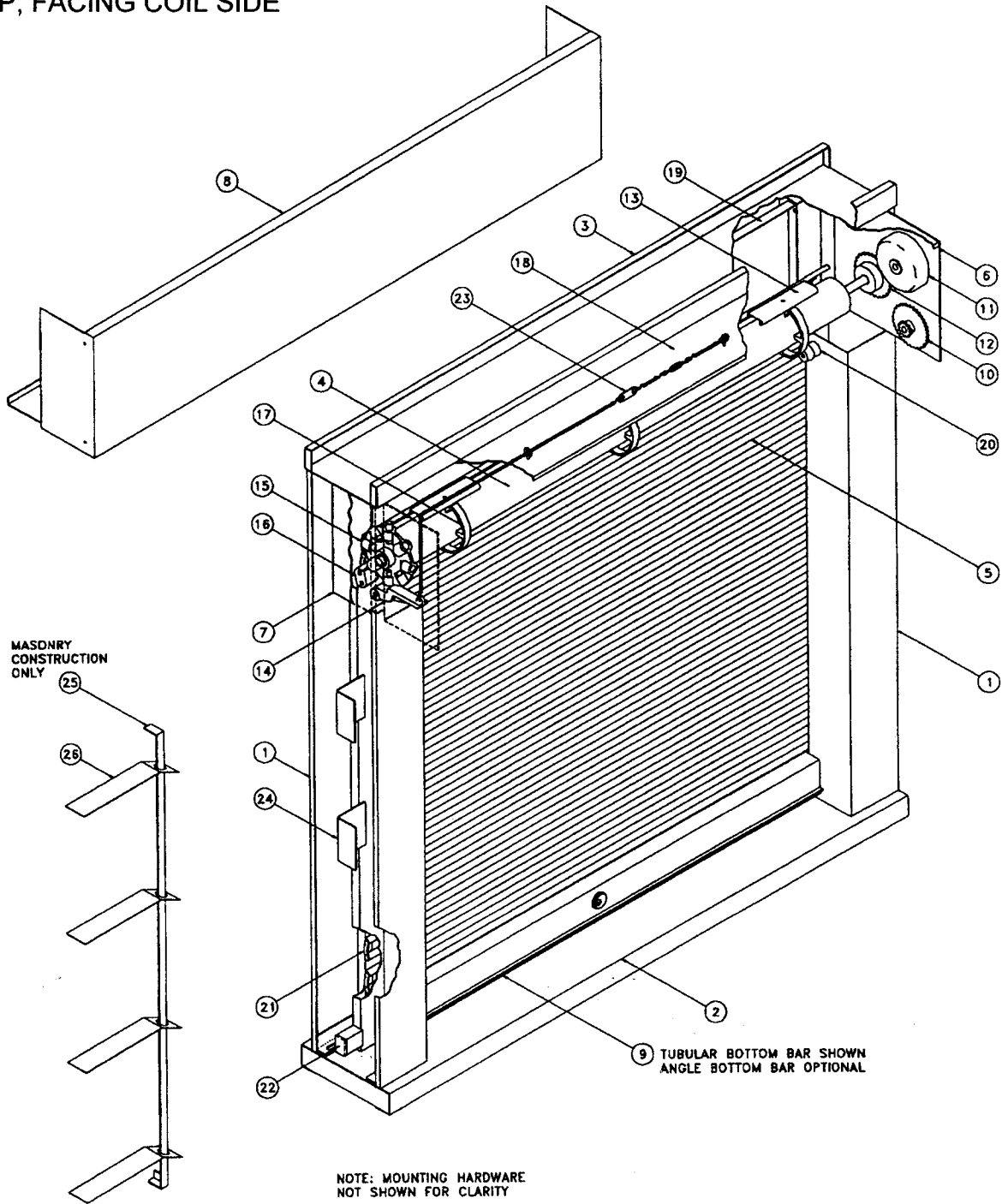


For more information...
Contact the Service Department
Please Call 800-233-8366
Or Fax 800-526-0841

Crestwood Industrial Park, Mountaintop, PA 18707

PARTS LIST - PACKAGE UNIT

PUSH-UP, FACING COIL SIDE



1	JAMBS	9	BOTTOM BAR	20	RUBBER STOPPERS
2	SILL ASSEMBLY	13	FASTENING SECTION SLATS	21	ENDLOCKS (RIVETED TO SLATS)
3	HEAD ASSEMBLY	15	ADJUSTING WHEEL WITH PIN	22	PLASTER GUARDS
4	BARREL (COUNTERBALANCE SHAFT)	13	RINGS	24	DRYWALL ANCHORS
5	CURTAIN SLATS	18	TOP CLOSURE	25	MASONRY MOUNTING ANGLE
8	HOOD	19	FASCIA	26	MASONRY ANCHORS

PACKAGE UNIT INSTALLATION INSTRUCTIONS (Push-up, Facing Coil Side)

NOTE: This unit must be installed as wall is being built.

- STEP 1** Before beginning installation remove all packaging material from the unit and test the curtain to see that it operated properly. Check over entire unit to see that there is no damage and that unit is square. The unit may be tested at this time if desired for automatic closing by releasing the tension on the fusible link chain. **(Refer to the section below on Testing and Resetting.)**

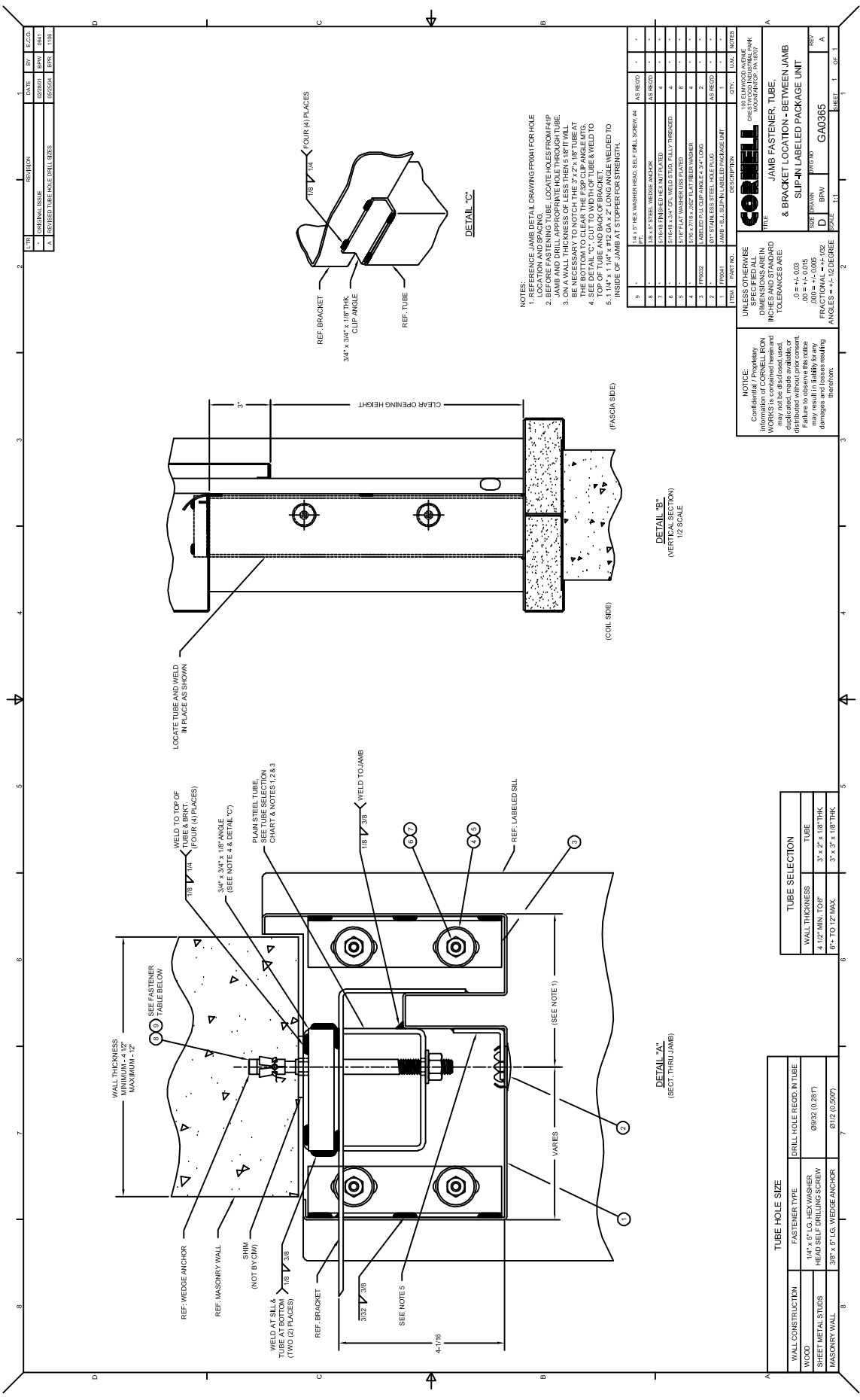
NOTE: It will be necessary to remove the hood to reset the unit if it is tested.

- STEP 2** The wall or stud framing at this point should be built up the point where it is the proper height to support the unit at the underside of the sill. Compare this dimension against the dimension shown on the shop drawing to see that the two match. Next check this portion of the wall to see that it is level so unit will not have to be shimmed.

The unit may now be lifted into position at the opening and fastened in position as shown on the enclosed details.

NOTE: Do not lift unit at the center of the sill or coil area! Lift only by the side jambs to prevent damage.

- STEP 3** Once the unit is securely fastened into the wall construction it should again be tested for proper operation. Run the curtain up and down a few times to see that it operated smoothly without binding. The spring tension is pre-set at the factory and should not require further adjustment. When properly adjusted the curtain should stay down on the sill when closed, pull up slightly against the stop bumpers when open and be slightly heavy through the middle. The spring tension may be adjusted if desired by following the procedure outlined below for testing and resetting.



DATE	REV	BY	E.C.O.
02/28/04		APM	0041
05/25/04		APM	1100
REVISED TUBE HOLE DRILL SIZES			

ITEM	DESCRIPTION	QTY	UNIT
1	1/4" x 5" LG. HEX WASHER	AS REQ'D	-
2	1/4" x 5" LG. SELF DRILLING SCREW	AS REQ'D	-
3	3/8" x 5" LG. WEDGE ANCHOR	AS REQ'D	-
4	3/4" x 3/4" x 1/8" CLIP ANGLE	4	PCS
5	PLAIN STEEL TUBE	1	EA
6	1/4" x 5" LG. HEX WASHER	AS REQ'D	-
7	1/4" x 5" LG. SELF DRILLING SCREW	AS REQ'D	-
8	3/8" x 5" LG. WEDGE ANCHOR	AS REQ'D	-
9	PLAIN STEEL TUBE	AS REQ'D	-
10	PLAIN STEEL TUBE	AS REQ'D	-
11	PLAIN STEEL TUBE	AS REQ'D	-
12	PLAIN STEEL TUBE	AS REQ'D	-
13	PLAIN STEEL TUBE	AS REQ'D	-
14	PLAIN STEEL TUBE	AS REQ'D	-
15	PLAIN STEEL TUBE	AS REQ'D	-
16	PLAIN STEEL TUBE	AS REQ'D	-
17	PLAIN STEEL TUBE	AS REQ'D	-
18	PLAIN STEEL TUBE	AS REQ'D	-
19	PLAIN STEEL TUBE	AS REQ'D	-
20	PLAIN STEEL TUBE	AS REQ'D	-
21	PLAIN STEEL TUBE	AS REQ'D	-
22	PLAIN STEEL TUBE	AS REQ'D	-
23	PLAIN STEEL TUBE	AS REQ'D	-
24	PLAIN STEEL TUBE	AS REQ'D	-
25	PLAIN STEEL TUBE	AS REQ'D	-
26	PLAIN STEEL TUBE	AS REQ'D	-
27	PLAIN STEEL TUBE	AS REQ'D	-
28	PLAIN STEEL TUBE	AS REQ'D	-
29	PLAIN STEEL TUBE	AS REQ'D	-
30	PLAIN STEEL TUBE	AS REQ'D	-
31	PLAIN STEEL TUBE	AS REQ'D	-
32	PLAIN STEEL TUBE	AS REQ'D	-
33	PLAIN STEEL TUBE	AS REQ'D	-
34	PLAIN STEEL TUBE	AS REQ'D	-
35	PLAIN STEEL TUBE	AS REQ'D	-
36	PLAIN STEEL TUBE	AS REQ'D	-
37	PLAIN STEEL TUBE	AS REQ'D	-
38	PLAIN STEEL TUBE	AS REQ'D	-
39	PLAIN STEEL TUBE	AS REQ'D	-
40	PLAIN STEEL TUBE	AS REQ'D	-
41	PLAIN STEEL TUBE	AS REQ'D	-
42	PLAIN STEEL TUBE	AS REQ'D	-
43	PLAIN STEEL TUBE	AS REQ'D	-
44	PLAIN STEEL TUBE	AS REQ'D	-
45	PLAIN STEEL TUBE	AS REQ'D	-
46	PLAIN STEEL TUBE	AS REQ'D	-
47	PLAIN STEEL TUBE	AS REQ'D	-
48	PLAIN STEEL TUBE	AS REQ'D	-
49	PLAIN STEEL TUBE	AS REQ'D	-
50	PLAIN STEEL TUBE	AS REQ'D	-
51	PLAIN STEEL TUBE	AS REQ'D	-
52	PLAIN STEEL TUBE	AS REQ'D	-
53	PLAIN STEEL TUBE	AS REQ'D	-
54	PLAIN STEEL TUBE	AS REQ'D	-
55	PLAIN STEEL TUBE	AS REQ'D	-
56	PLAIN STEEL TUBE	AS REQ'D	-
57	PLAIN STEEL TUBE	AS REQ'D	-
58	PLAIN STEEL TUBE	AS REQ'D	-
59	PLAIN STEEL TUBE	AS REQ'D	-
60	PLAIN STEEL TUBE	AS REQ'D	-
61	PLAIN STEEL TUBE	AS REQ'D	-
62	PLAIN STEEL TUBE	AS REQ'D	-
63	PLAIN STEEL TUBE	AS REQ'D	-
64	PLAIN STEEL TUBE	AS REQ'D	-
65	PLAIN STEEL TUBE	AS REQ'D	-
66	PLAIN STEEL TUBE	AS REQ'D	-
67	PLAIN STEEL TUBE	AS REQ'D	-
68	PLAIN STEEL TUBE	AS REQ'D	-
69	PLAIN STEEL TUBE	AS REQ'D	-
70	PLAIN STEEL TUBE	AS REQ'D	-
71	PLAIN STEEL TUBE	AS REQ'D	-
72	PLAIN STEEL TUBE	AS REQ'D	-
73	PLAIN STEEL TUBE	AS REQ'D	-
74	PLAIN STEEL TUBE	AS REQ'D	-
75	PLAIN STEEL TUBE	AS REQ'D	-
76	PLAIN STEEL TUBE	AS REQ'D	-
77	PLAIN STEEL TUBE	AS REQ'D	-
78	PLAIN STEEL TUBE	AS REQ'D	-
79	PLAIN STEEL TUBE	AS REQ'D	-
80	PLAIN STEEL TUBE	AS REQ'D	-
81	PLAIN STEEL TUBE	AS REQ'D	-
82	PLAIN STEEL TUBE	AS REQ'D	-
83	PLAIN STEEL TUBE	AS REQ'D	-
84	PLAIN STEEL TUBE	AS REQ'D	-
85	PLAIN STEEL TUBE	AS REQ'D	-
86	PLAIN STEEL TUBE	AS REQ'D	-
87	PLAIN STEEL TUBE	AS REQ'D	-
88	PLAIN STEEL TUBE	AS REQ'D	-
89	PLAIN STEEL TUBE	AS REQ'D	-
90	PLAIN STEEL TUBE	AS REQ'D	-
91	PLAIN STEEL TUBE	AS REQ'D	-
92	PLAIN STEEL TUBE	AS REQ'D	-
93	PLAIN STEEL TUBE	AS REQ'D	-
94	PLAIN STEEL TUBE	AS REQ'D	-
95	PLAIN STEEL TUBE	AS REQ'D	-
96	PLAIN STEEL TUBE	AS REQ'D	-
97	PLAIN STEEL TUBE	AS REQ'D	-
98	PLAIN STEEL TUBE	AS REQ'D	-
99	PLAIN STEEL TUBE	AS REQ'D	-
100	PLAIN STEEL TUBE	AS REQ'D	-

CORNELL
CRESTWOOD INDUSTRIAL PARK
BOONVILLE, PA 17004

JAMB FASTENER, TUBE, & BRACKET LOCATION - BETWEEN JAMB SLIP-IN LABELED PACKAGE UNIT

REV: 04/01/03
D BPNW
GAU365

SCALE: 1/2

SHEET: 1 OF 1

NOTE:
Cornell Iron Works is a registered trademark of Cornell Iron Works. Information of Cornell Iron Works is contained herein and is not to be reproduced, duplicated, made available, or distributed without prior consent of Cornell Iron Works. All rights reserved. Inquiries should be directed to Cornell Iron Works for more information.

WALL CONSTRUCTION	PASTERNER TYPE	DRILL HOLE RECD. IN TUBE
WOOD	1/4" x 5" LG. HEX WASHER	Ø932 (0.281")
SHEET METAL STUDS	HEAD SELF DRILLING SCREW	Ø712 (0.500")
MASONRY WALL	3/8" x 5" LG. WEDGE ANCHOR	

WALL THICKNESS	4 1/2" MIN. TO 8"
8" TO 12" MAX.	

TUBE SELECTION	TUBE
WALL THICKNESS	3" x 3" x 1/8" THICK
4 1/2" MIN. TO 8"	
8" TO 12" MAX.	

WALL CONSTRUCTION	PASTERNER TYPE	DRILL HOLE RECD. IN TUBE
WOOD	1/4" x 5" LG. HEX WASHER	Ø932 (0.281")
SHEET METAL STUDS	HEAD SELF DRILLING SCREW	Ø712 (0.500")
MASONRY WALL	3/8" x 5" LG. WEDGE ANCHOR	